

## »PITCHED ARTICULATIONS« EXAMPLE

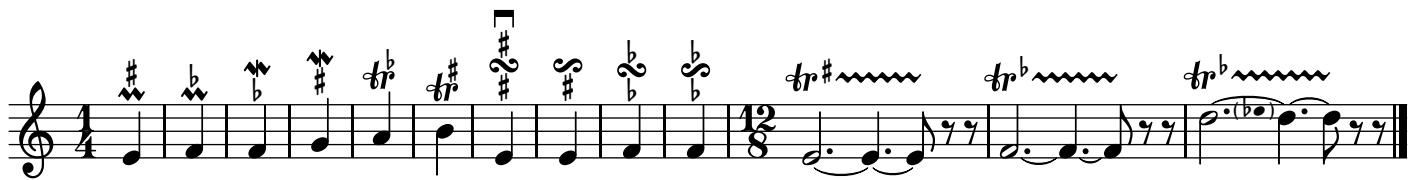
reduced to »minorPrall, -Mordent, -Trill, -Turn, -Reverseturn« and »majorPrall, ...« Some articulations may get an accidental added above or below it's symbol which indicates you have to play the toggle tone alternated and not according to the key signature's scale. Different to the known \pitchedTrill command there is no note head displayed which would indicate the correct accidental, but the accidental sign in the compound articulation symbol has to be altered according to your key and transposition. Fortunately there are only the steps of a minor and a major second in use for the distance between the base pitch and the toggle pitch. Here is a list of commands you can use instead of \prall, \mordent, \turn, \reverseturn, \trill, and \startTrillSpan when you want to have an accidental displayed, based on your wish to use a one or a two semitones step: \minorPrall, \majorPrall, \minorMordent, \majorMordent, \minorTrill, \majorTrill, \startMinorTrillSpan, \startMajorTrillSpan for the one sided articulations and \minorNormalTurn, \majorNormalTurn, \normalMinorTurn, \normalMajorTurn, \minorMinorTurn, \minorMajorTurn, \majorMinorTurn, \majorMajorTurn, \minorNormalReverseturn, \majorNormalReverseturn, \normalMinorReverseturn, \normalMajorReverseturn, \minorMinorReverseturn, \minorMajorReverseturn, \majorMinorReverseturn, \majorMajorReverseturn for the double sided articulations, which list the step size selectors in the order of playing, i.e. above—below for \...Turn while below—above for \...Reverseturn. Although you could use \startMinorTrillSpan and \startMajorTrillSpan in combination with a \pitchedTrill command, it is wise to use \startPitchedTrillSpan instead. This will read the accidental from the specified trill pitch, while the other commands do not synchronize with the pitched trill.

```
e'\majorPrall f'\minorPrall f'\majorMordent g'\minorMordent as'\minorTrill
b'\majorTrill e'\majorNormalTurn e'\minorMinorTurn f'\minorNormalTurn
f'\minorMajorTurn eis'\minorNormalReverseturn f'\majorMinorReverseturn
e'2.\startMajorTrillSpan ... f'2.\startMinorTrillSpan ...
\pitchedTrill d''2.~ \startPitchedTrillSpan es'' ...
```

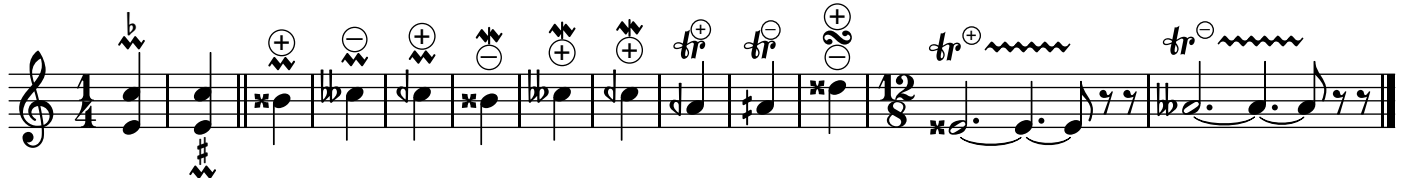


There also exist predefined »\once \override« commands which set a specific before-line-breaking procedure to convert a standard articulation into it's pitched (accidentalized) type. Even there only the requested articulation is modified, thus you may combine it with an upbow or downbow articulation for example. The predefined override commands are \nextPrallMajor, \nextMordentMajor, \nextTrillMajor, \nextTrillSpanMajor, \nextPrallMinor, \nextMordentMinor, \nextTrillMinor, \nextTrillSpanMinor, \nextTurnMajorNormal, \nextReverseturnMajorNormal, \nextTurnMinorNormal, \nextReverseturnMinorNormal, \nextTurnNormalMajor, \nextReverseturnNormalMajor, \nextTurnNormalMinor, \nextReverseturnNormalMinor, \nextTurnMajorMinor, \nextReverseturnMajorMinor, \nextTurnMajorMajor, \nextReverseturnMajorMajor, \nextTurnMinorMinor, \nextReverseturnMinorMinor \nextTurnMinorMajor, \nextReverseturnMinorMajor, and \nextTrillSpanPitched. Also note, neither major/minor-Trill nor -TrillSpan is coupled with the \pitchedTrill command. You have to take care on your own to create matching results, or better you use \nextTrillSpanPitched.

```
\nextPrallMajor e'\prall \nextPrallMinor f'\prall \nextMordentMajor f'\mordent
\nextMordentMinor g'\mordent \nextTrillMinor a'\trill \nextTrillMajor b'\trill
\nextTurnMajorMinor e'\turn\downbow \nextReverseturnMinorNormal e'\reverseturn
\nextTurnMinorMajor f'\turn \nextReverseturnMajorMinor f'\reverseturn
\nextTrillSpanMajor e'2.\startTrillSpan ...
\nextTrillSpanMinor f'2.\startTrillSpan ...
\nextTrillSpanPitched \pitchedTrill d''2. \startTrillSpan es'' ...
```



Off course, these pitched accidentals do not really make sense for chords, but the first pitch listed inside the chord will be evaluated. Moreover, when an accidental overflow occurs (more than two semitones) or for quarter tones a fallback symbol will be set. By the way, not all  $5 \times 5 = 25$  combinations of the double sided accidentalized articulations do exist. In our traditional music notation only 16 of them are possible, and only these layouts are defined in the function code.



### Delayed turn and reversion:

When you try to create a delayed turn or reversion using a skip then the routines can not find any notehead from which to read the pitch. Here, try my `\pitchedSkip` routine. It takes one argument (music) and sets once the notehead to be transparent (invisible), while the stencil for accidentals, dots, ledger lines, stem and flags are turned off. Unfortunately you have to take care you are not creating any additional beam line! (You will see that result, if you replace `»c'8*1/4«` with `»c'32«` in this example)

```
DelayExample = {
  as2.*3/4( \pitchedSkip as8.\majorMinorTurn c'8)
  c'8*3/4([ \pitchedSkip c'8*1/4\majorMinorReversion es'8])
}
{ \time 9/8 \DelayExample
  \key a \major \transpose es c' \DelayExample \bar "|." }
```

